

Solstice enables users to mirror Apple iOS devices with AirPlay® functionality – including iPhones and iPads with iOS 7 and higher – to Solstice wireless displays. Follow the steps below to mirror your iOS device.*

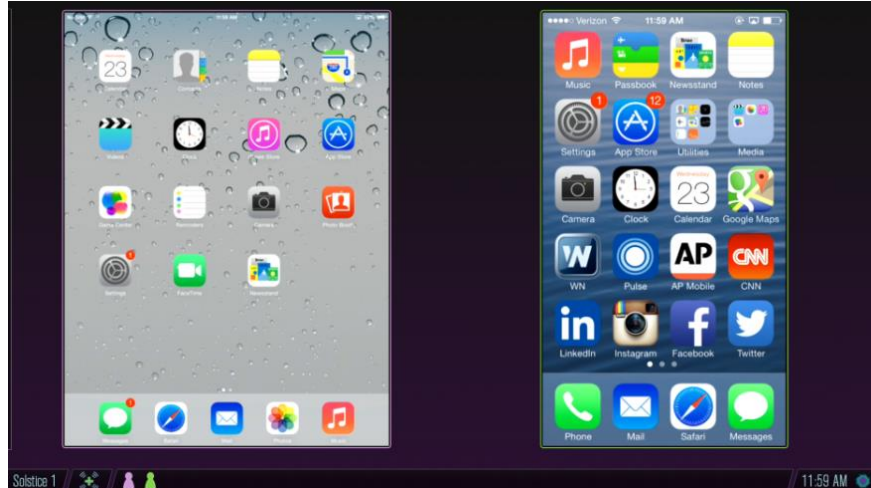


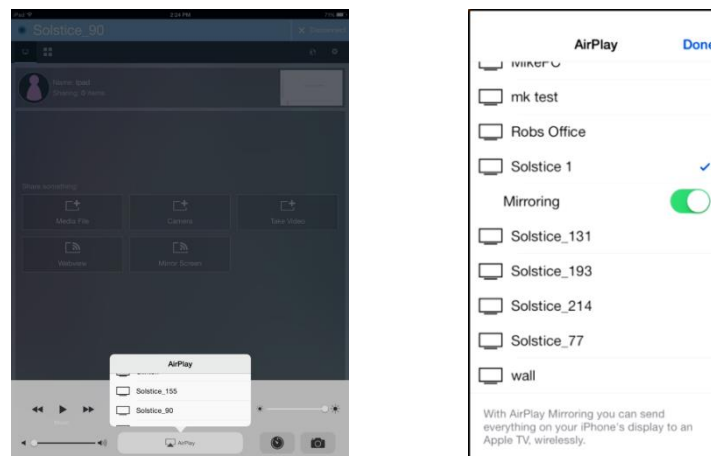
Figure 1: iPad and iPhone mirrored to a Solstice Wireless Display

To mirror iOS 7, 8, & 9* devices with AirPlay®, follow these steps:

1. Ensure the iOS device is on the WiFi network used to connect to the Solstice display.
2. Swipe upward from the bottom of the iOS device screen to open the Control Center.
3. Tap the AirPlay® button, select the desired Solstice display, and enable mirroring.
4. If prompted, enter the screen key visible on the Solstice display.

*Mirroring support for iOS 9 is available with the Solstice Pod and Solstice Software (server) versions 2.5 and later. Earlier versions of Solstice do not support mirroring for iOS 9 devices.

If the desired display does not appear in the AirPlay® menu of your device, open the Solstice app and connect to the display via the app first. Then the display should appear in the AirPlay® menu to begin mirroring. Note that Solstice Pods support one iOS mirroring stream at a time.



Figures 2 & 3: iPad and iPhone AirPlay menus

In addition to following the steps above, your network must also be configured to allow iOS mirroring. If you are not able to mirror your AirPlay®-enabled device to the Solstice display, please contact your network or IT administrator, or visit the [Mersive Customer Support Portal](#) for more information.